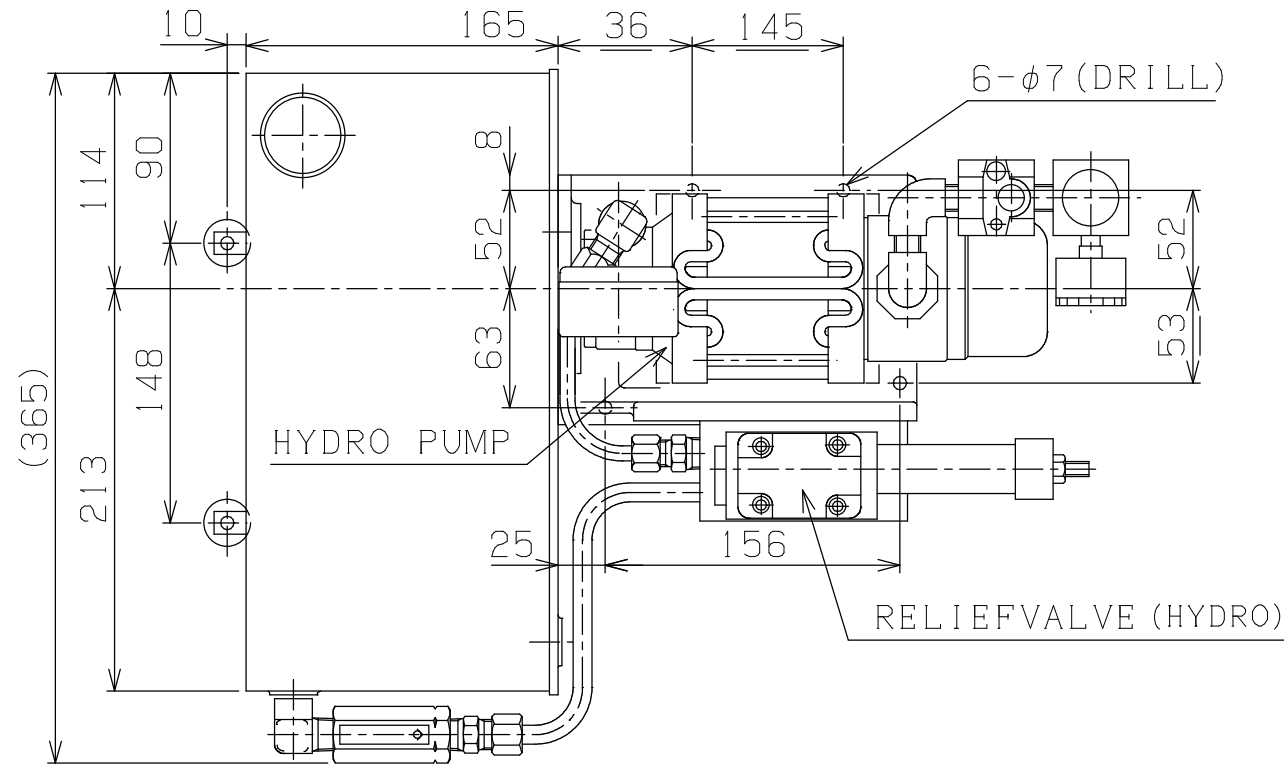
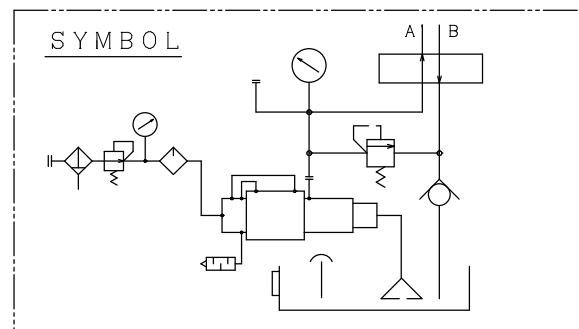
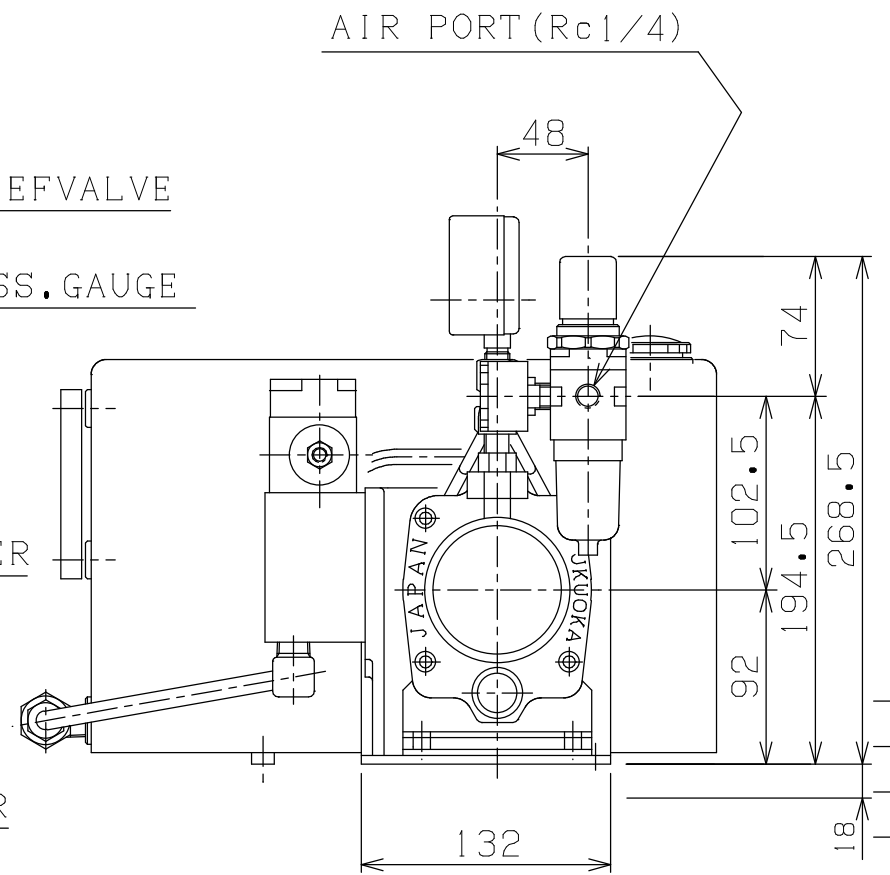
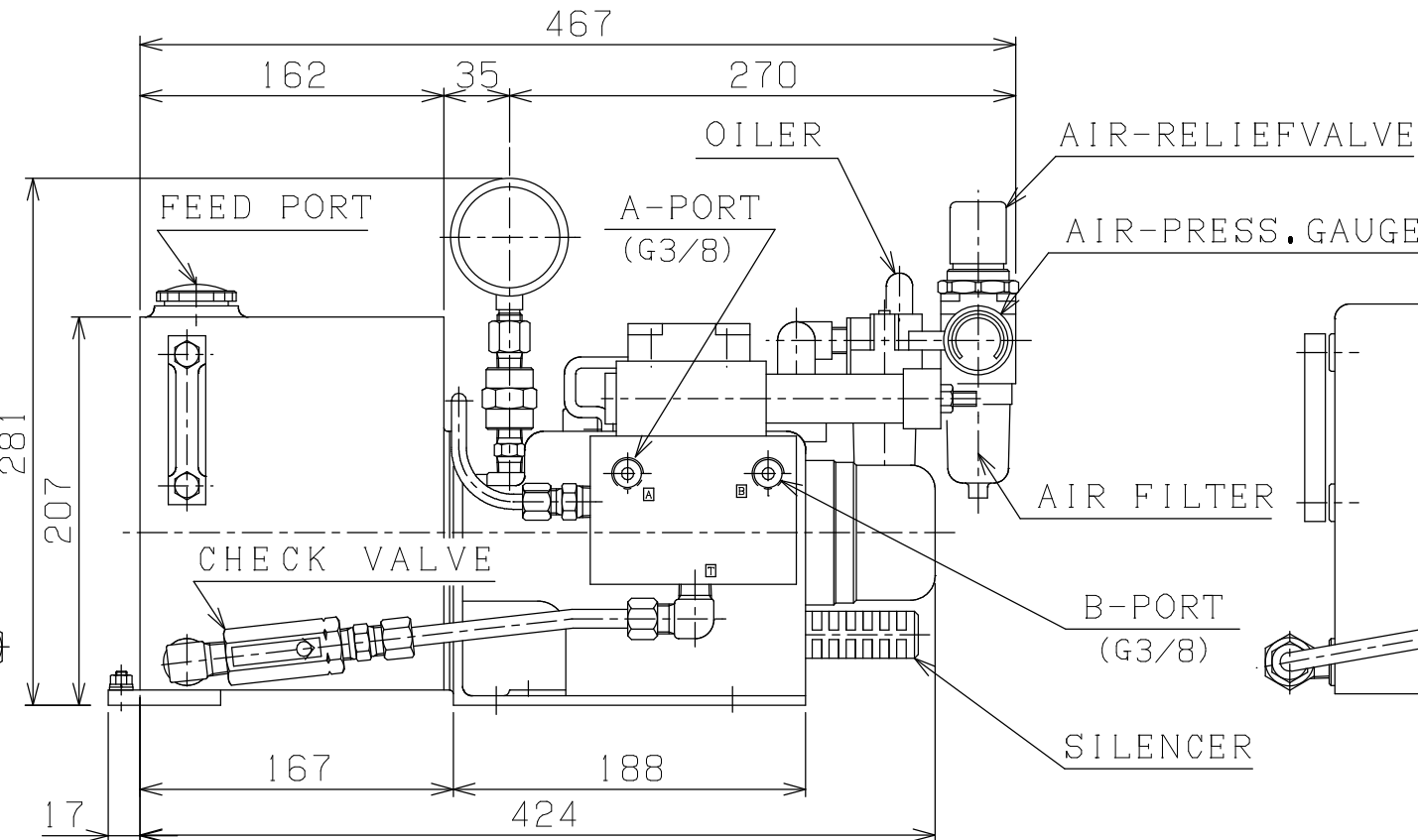
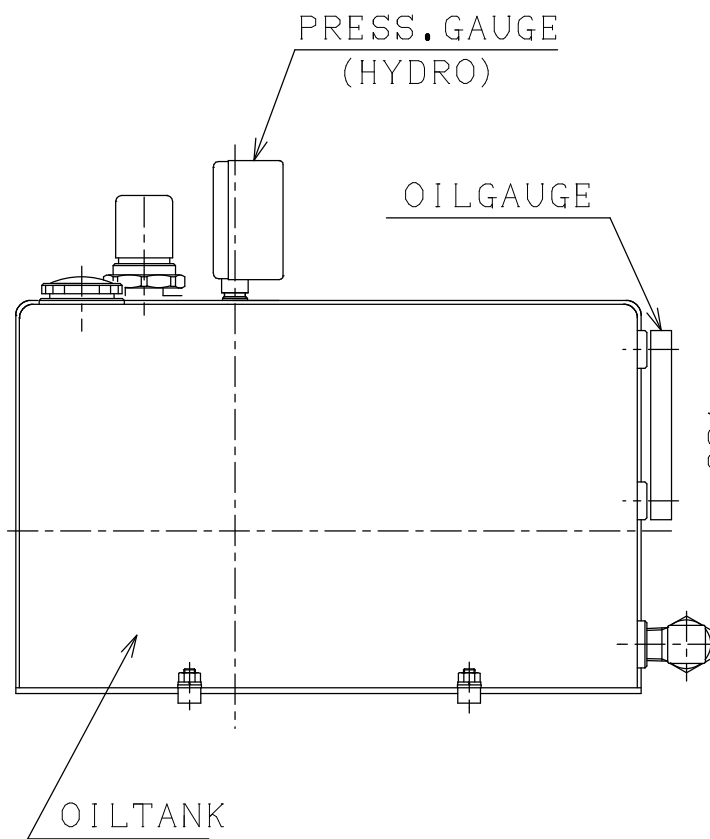


A3-1381R



SPECIFICATION	
MAX.PRESS.(HYDRO)	18.6MPa (190kgf/cm ²)
MAX.PRESS.(AIR)	0.8MPa (8.0kgf/cm ²)
AIR CONSUMPTION	2m ³ /min.
INCREASING RATIO	1:24
DISCHARGE	PERFORMANCE CURVE
BACK PRESSURE	0.35MPa (T-PORT CHECK)
WORKING FLUID	ISO VG22~46
TANK CAPACITY	MAX.=8.0L EFFECTIVE=6.0L
WEIGHT (ABOUT)	25kg



PLAN RECORD	基本仕上	MARK	PARTICULAR	QUAN	MATERIAL	SIZE	WEIGHT	REMARK
	寸法許容差	C H I E F		M H P U 2 4 - R 8 L C				
	区分許容差	H E A D						
	1 ~ 4 ±0.1	CHECKED BY		H Y D R O P U M P U N I T				
	5 ~ 16 ±0.2	DRAWN BY						
	17 ~ 63 ±0.3	DATE DRAWN		DRAWING NO.	A 3 - 1 3 8 1 R			
	64 ~ 250 ±0.5	SCALE		R I X リックス株式会社 RIX CORPRATION				
	250~1000 ±0.8	1 / 4						

記号
400S
100S
25S
6.3S
0.8S